



Flat 4, Hobart House Ruskin Grove, Maidstone, Kent, ME15 9WL
Guide price £190,000

GUIDE PRICE £190,000 - £200,000BEAUTIFULLY PRESENTED TWO BEDROOM APARTMENT IN A WELL ESTABLISHED DEVELOPMENT WITHIN WALKING DISTANCE OF LOCAL AMMENTIES INCLUDING MORRISONS SUPERMARKET AND POPULAR PRIMARY AND SECONDARY SCHOOLS.

Situated in a sought after development, Hobart House sits a prime position with live hedging, trees and vegetation visible from the feature bay window of the sitting room providing beautiful views and privacy within the apartment.

The development is a short walk from handy amenities including Morrisons Supermarket as well as popular Primary and Secondary Schools. There is a frequent bus service offered from Sutton Road to Maidstone Town Centre for further shopping, social and educational facilities. For the commuter, Maidstone West or East are around 2.5 miles away providing services to London Victoria and Charing Cross, or alternatively Headcorn Station is a short drive away with further direct trains to London.

On offer to this fabulous apartment is a communal entrance hall with stairs leading to the first floor and the front door of Flat 4. Inside, there is a spacious entrance hall with cupboard providing ample storage, a family bathroom with shower over the bath and a glass screen, two bedrooms with built in wardrobes to the main bedroom. The living space benefits from triple aspect windows which flood the room with light and comprises a sitting room with feature curved bay window, a dining area and a modern kitchen with integrated fridge freezer and space for a dishwasher. Outside, the development is well maintained and the home benefits from a communal garden area as well as allocated parking and visitor parking bays on site.

If you are on the market for a spacious home in a sought after position, then call Page and Wells Loose Office today and book your viewing to avoid missing out.



On The Ground Floor

Communal Entrance Hall

On The First Floor

Entrance Hall

Sitting Room 13'6 x 13 (4.11m x 3.96m)

Kitchen and Dining Area 17'3 x 8'8 (5.26m x 2.64m)

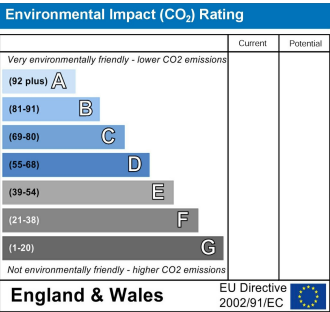
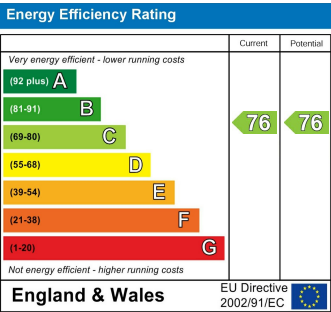
Bedroom 1 10'8 x 10'2 (3.25m x 3.10m)

Bedroom 2 10'8 x 7'8 (3.25m x 2.34m)

Bathroom

Externally

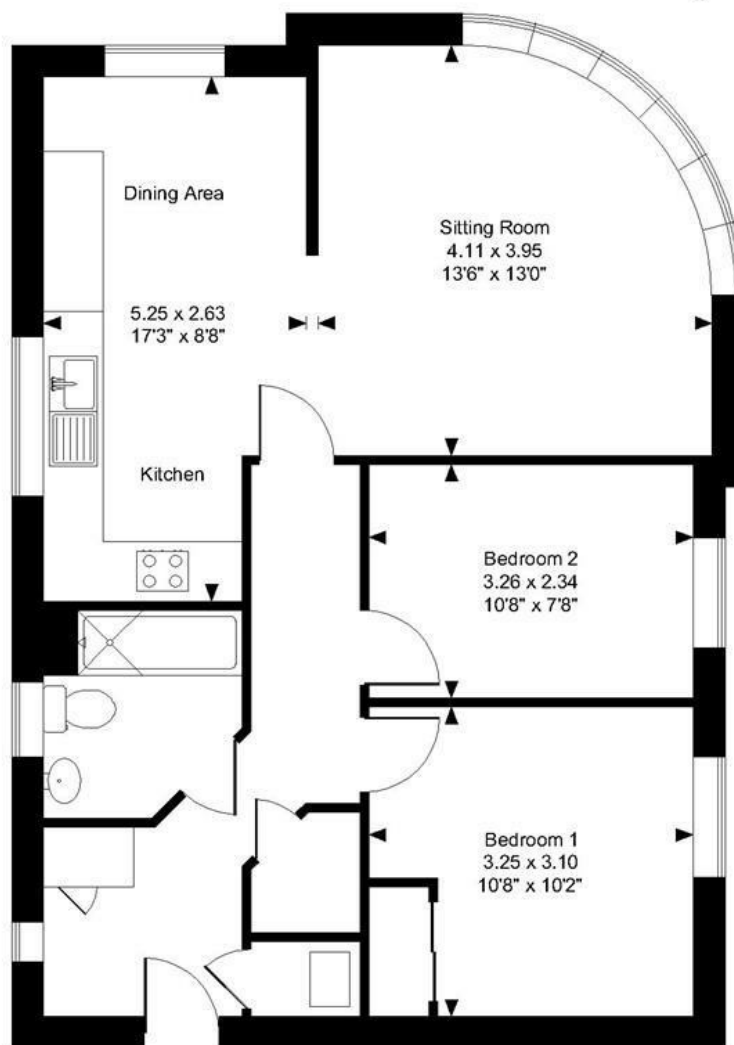
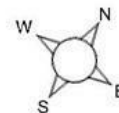
Allocated Parking



Page & Wells limited for themselves and for the vendors of this property whose agents they are give notice that: 1. These particulars do not constitute any part of, an offer or a contract. 2. All statements contained in these particulars as to this property are made without responsibility on the part of Page & Wells Limited or the Vendor. 3. None of the statements contained in these particulars as to the property is to be relied on as statements or representations of fact. 4. Any intending purchaser must satisfy himself by inspection or otherwise as to the correctness of each of the statements contained in these particulars. 5. The vendor does not make or give, and neither Page & Wells Limited nor any person in their employment has any authority to make or give any representation whatsoever in relation to this property. These particulars are supplied on the understanding that all negotiations are carried out throughout Page & Wells Limited. Properties with a reference prefixes EAA are those which Page & Wells Limited disclose an interest in accordance with the provisions of the Estates Agents Act 1979



Hobart House, Ruskin Grove, Maidstone
Approximate Gross Internal Area
666 Sq Ft/62 Sq M



First Floor

FOR ILLUSTRATIVE PURPOSES ONLY - NOT TO SCALE

The position & size of doors, windows, appliances and other features are approximate only.

© ehouse. Unauthorised reproduction prohibited. Drawing ref. dig/8467173/LCO

